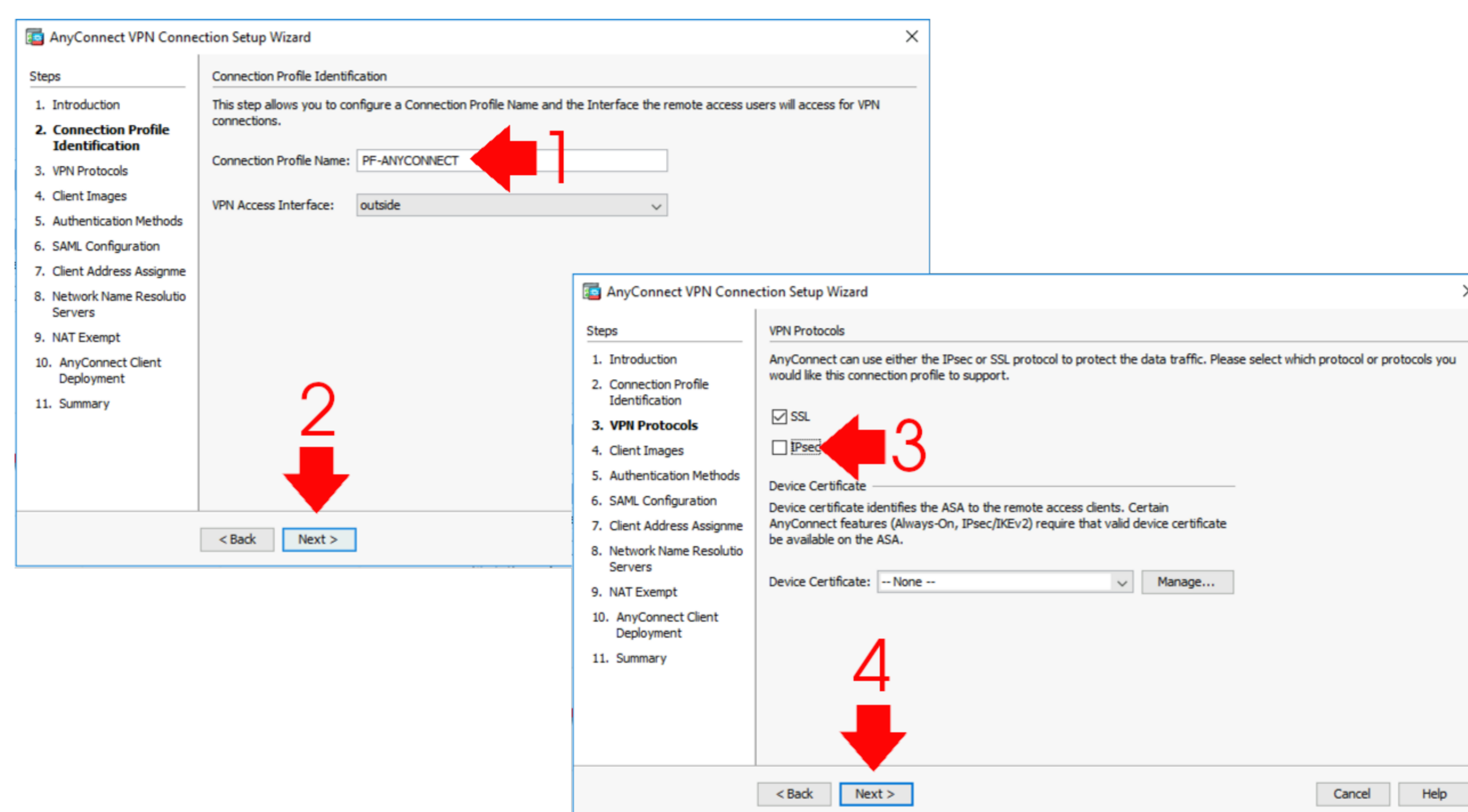


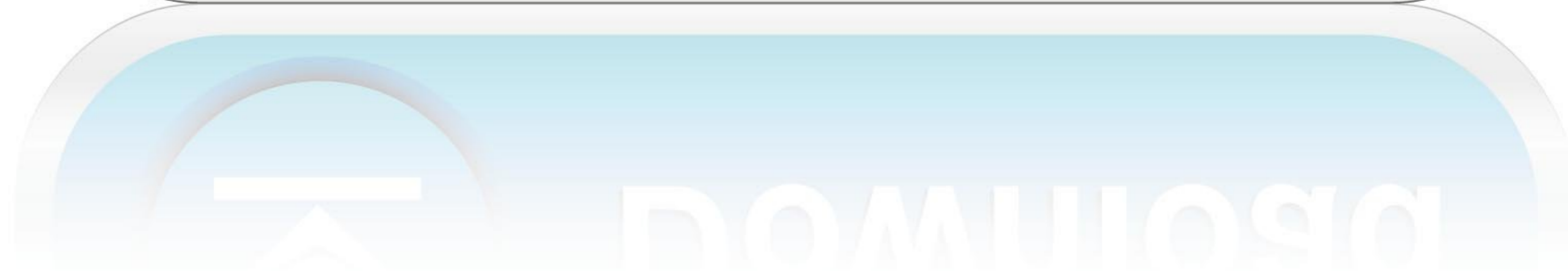


0-WEB.ru

[Install SSL Certificate Asa Firewall Connection](#)



[Install SSL Certificate Asa Firewall Connection](#)



0-WEB.ru

e CN= [] 3) Next click 'Email OTP' The ASA will then send an enrollment email to that user.. Install Ssl Certificate Asa Firewall Connections4) Optional: If you wish to manually enroll and obtain your certificate without email then go to /-CSCOCA+enroll.. Browse to the file they gave you and install it 10) You're done! Now we need to setup our SSLVPN on the ASA.. Also, the end-users client must trust the CA that generated the ASA's identity certificate.. Of course you can always use (and probably should use) an external CA server in production. I recommend using microsofts CA server; you can find configuration examples for how to use the ASA and MSFT CA together on And of we go! First things first, be sure you setup the basics on the ASA.. In order for everything to work correctly the certificate must match the ASA hostname/IP address.

5) Add a 'from address' and an email subject line 6) Click Apply Configure a trusted identity certificate on your ASA.

html Then follow the instructions You will still need to have your One Time password (OTP) handy though.. I am in no way an official spokesperson for my employer More from Jamey Heary: for more articles on security.. The tag must be relevant to the content you're sharing Plairs can used when available/necessary.

Click on CA Server Check to enable the CA server Fill out the form 1) Check 'create certificate authority server' 2) Type in a strong passphrase to protect your new root certificate 3) Leave the rest of the top part of the form at the defaults 4) Under 'SMTP Server' enter the IP address of your corporate smtp mail server.. 9) Once your CA gives you a cert go back here and click install Adobe lightroom serial number generator.. City of god shdrip english subtitles download for movies No other url shorteners of any kind.. Edit the profile you just created Under Authentication section choose 'Both' This will enable a username/password check and a certificate check.. So go there now (top bar > wizard > sshvpn) I'm keeping it simple and using the local user database but feel free to use ldap or radius instead for authentication.. Then choose the best method to find the exact username attribute in the certificate.. Next, we need to configure up our ASA CA server In ASDM, go to Configuration > Remote Access VPN > Certificate Management > Local Certificate Authority.. 1) click Add 2) Fill in the form Be sure to include a subject name If you will be using username pre-fill then be sure to include the username in the subject.. Highlight your profile and click edit Go to Advanced > Authentication Check 'Pre-fill username from certificate'.. The user will then need to install that certificate on their computer Go to Configuration > Remote Access VPN > Certificate Management > Local Certificate Authority > Manage User Database. e10e415e6f